



The Collegiate Sport Club Model: Examining How Sport Clubs Impact Positive Student Outcomes

Dr. Leeann Lower

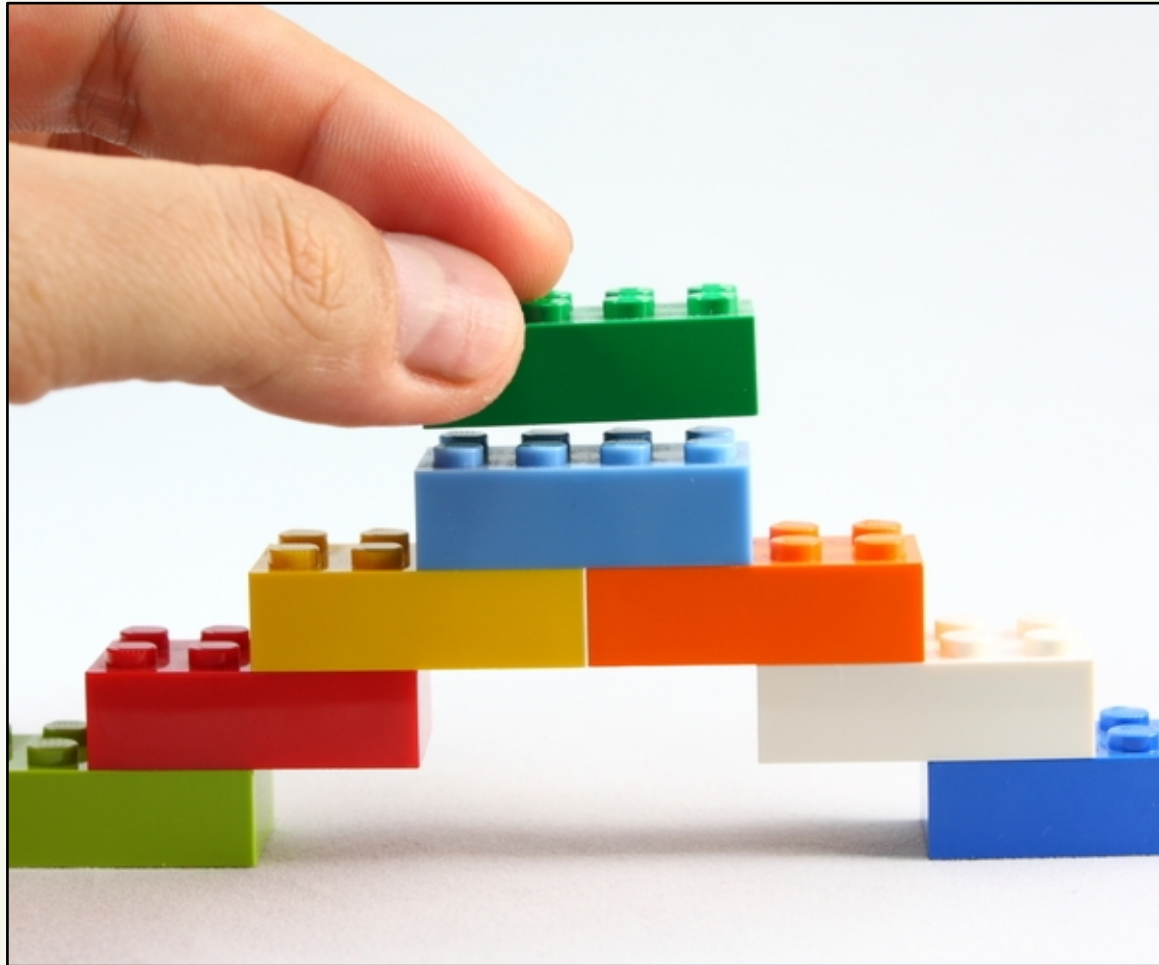
Richard Bailey

Mark Beattie

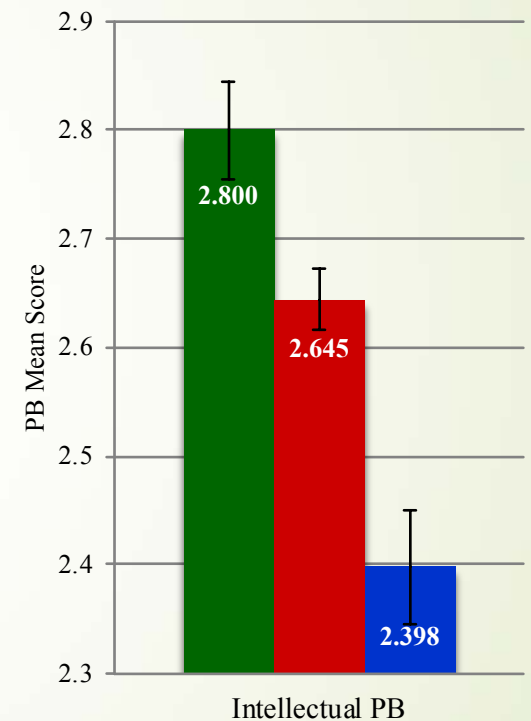
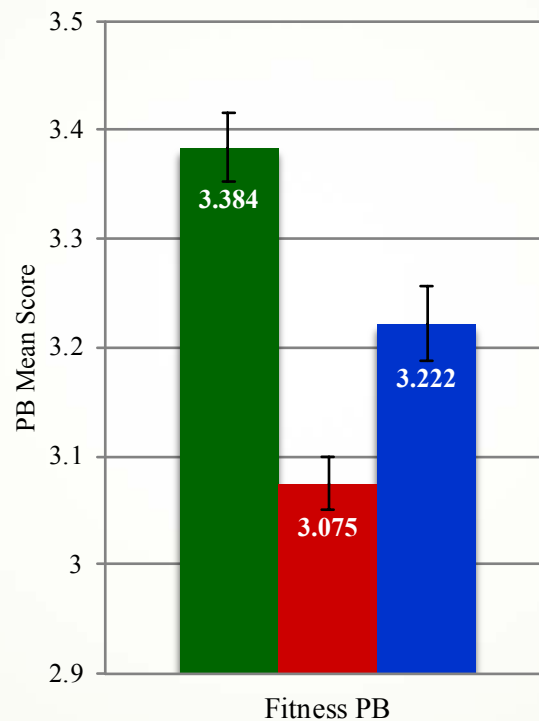
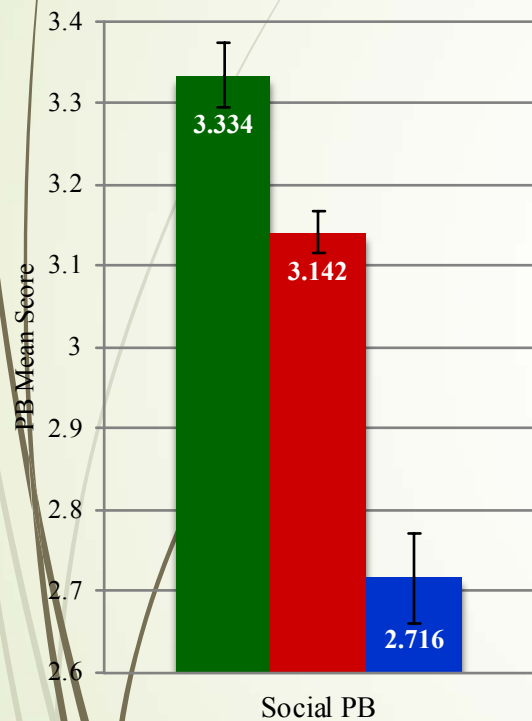
Tarkington Newman

Daniel Wray

Building Blocks of the Project

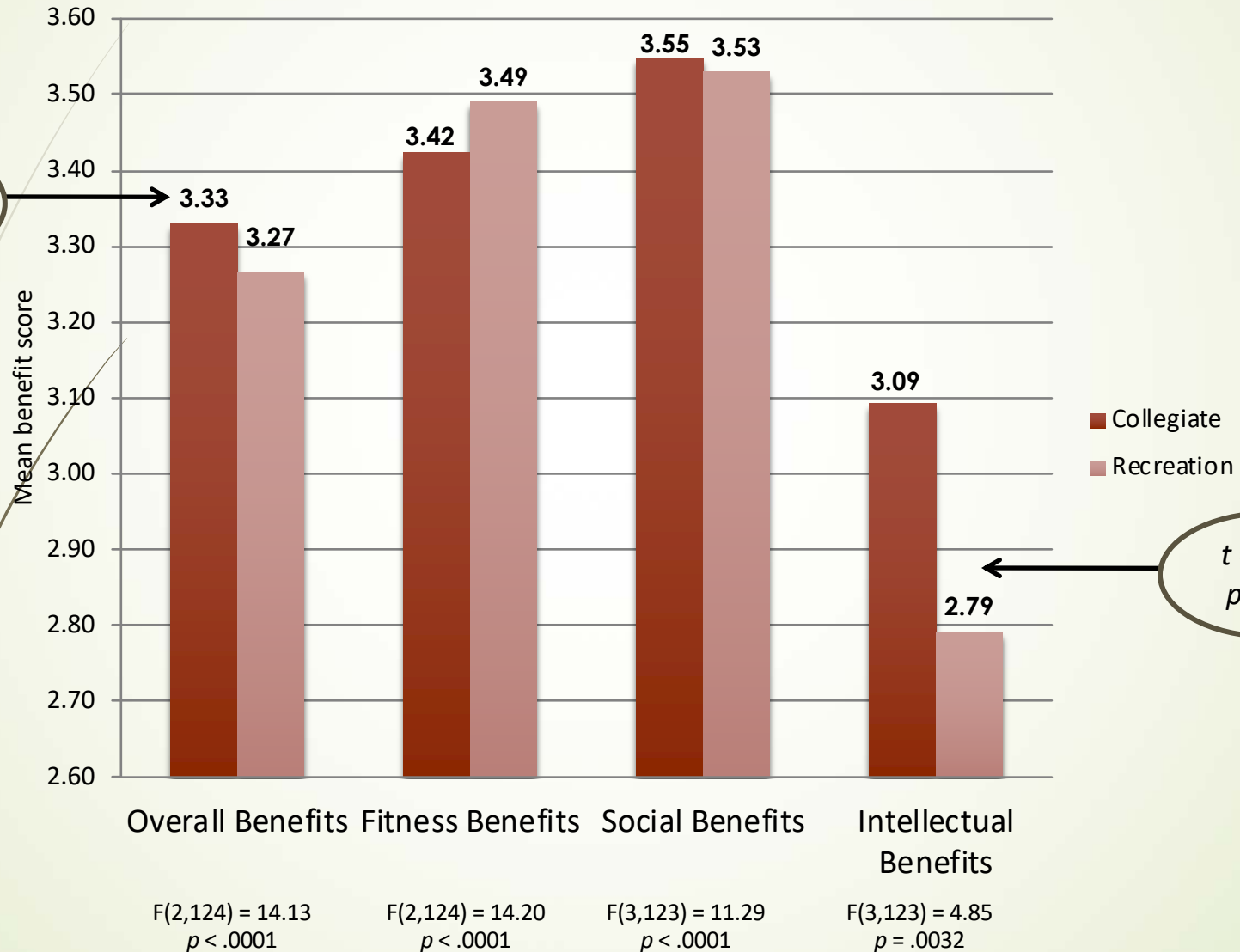


Comparing Rec Sport Programs



 Sport Clubs  Intramural Sports  Group Fitness

Collegiate Varsity vs. Club Sport



Financial Implications

► Collegiate varsity athletics are costly

► Example: Baylor University (BU)

► Collegiate Sport Revenue: \$11,754,286*

► Collegiate Sport Expenses: \$12,764,230*

	BU Collegiate Operating Expenses	BU Club Operating Expenses
Baseball	\$607,977	\$3,000
Soccer	\$138,055	\$3,000
Softball	\$230,870	\$3,000
Volleyball	\$266,791	\$3,000

* Excludes Football and Basketball



WHAT?

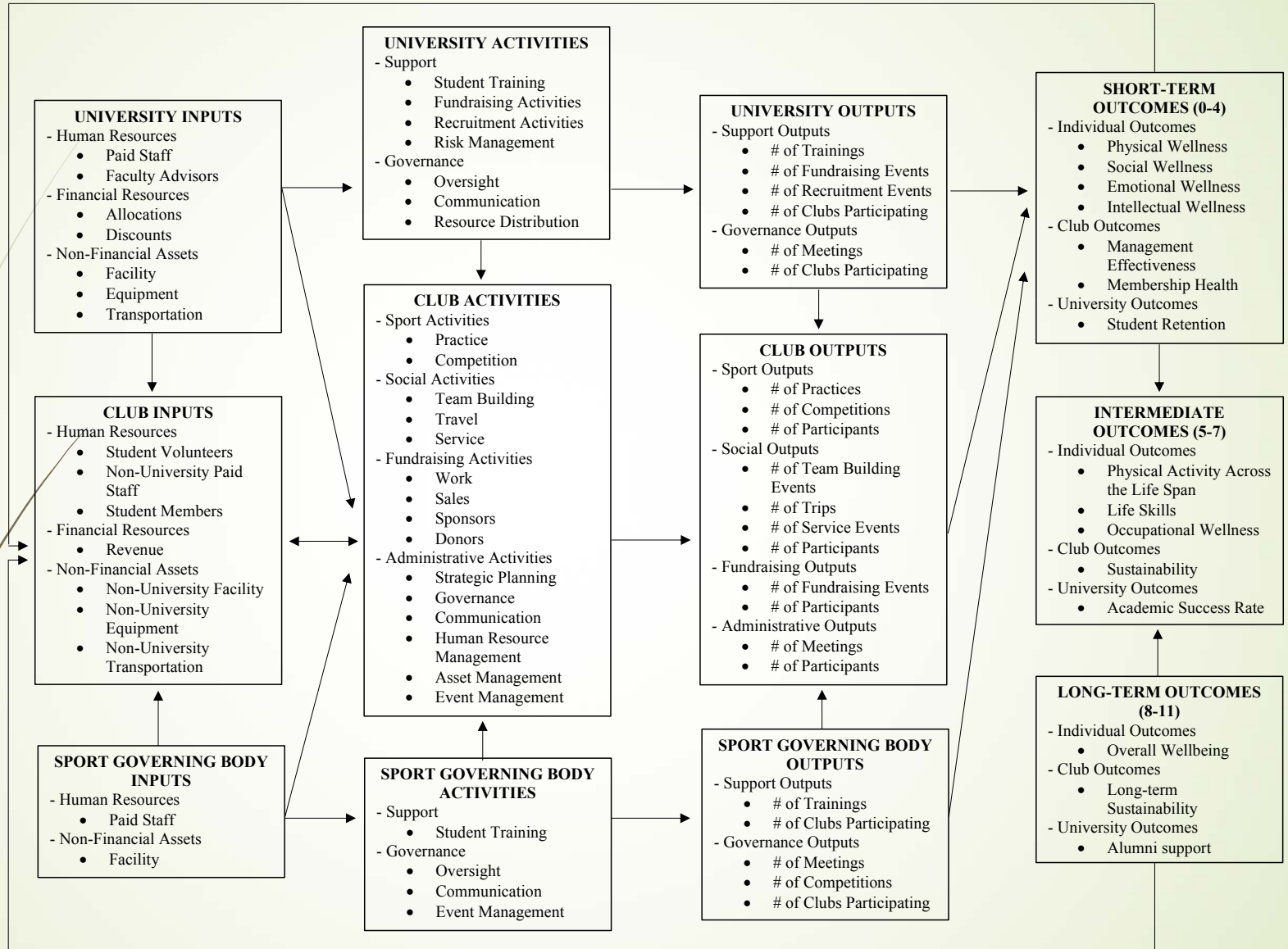


SO WHAT?



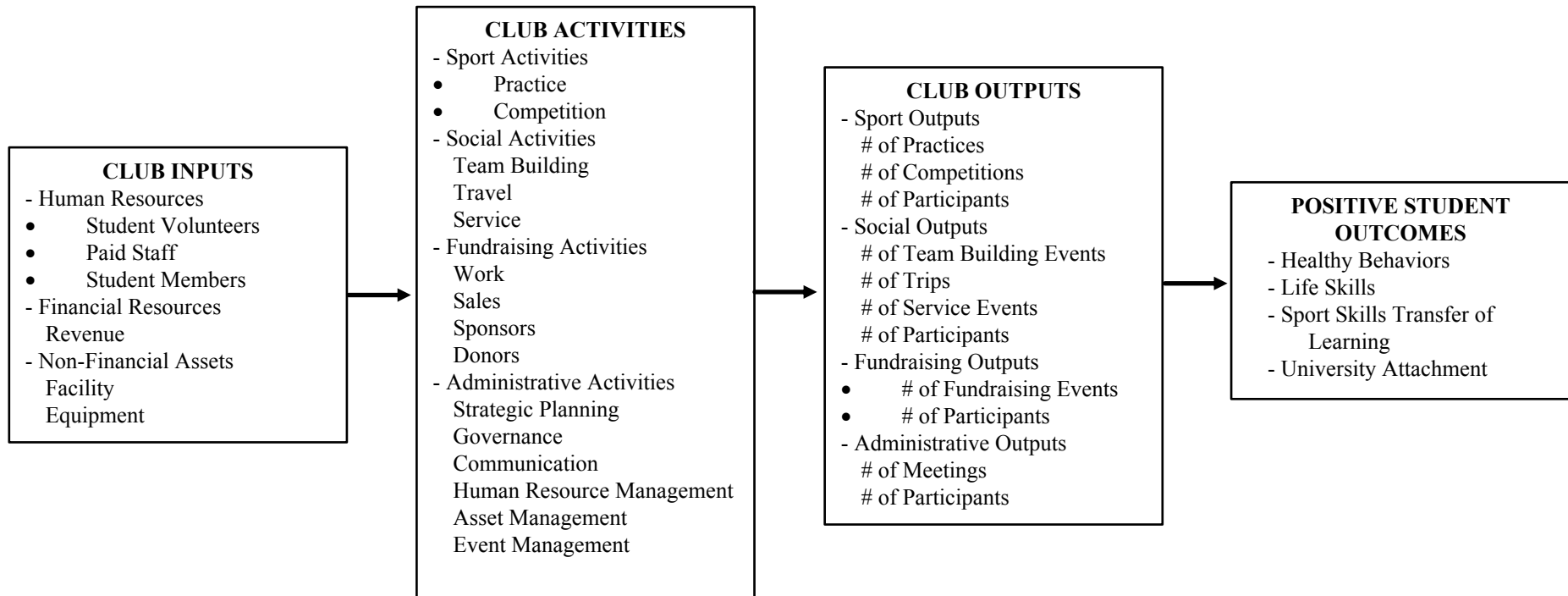
NOW WHAT?

CLUB PURPOSE & ASSUMPTIONS



EXTERNAL FACTORS (University, Sport Governing Body, & Environmental Constraints)

SPORTS AND SOCIETY



Conceptual Model Tested

Pilot Test – Preliminary Findings

MANOVA Univariate Effects

Attachment	Less than Average M(SD)	Greater than Average M(SD)	F(1, 141)	p
Club In-Season Competitions				
University Attachment	4.90(0.89)	5.06(0.75)	0.89	0.346
Member Attachment	4.47(0.87)	4.40(0.83)	0.20	0.653
Club Travel				
University Attachment	5.03(0.84)	4.93(0.84)	1.00	0.319
Member Attachment	4.49(0.81)	4.41(0.91)	1.16	0.283
Club Social Inclusionary Tactics				
University Attachment	4.69(0.88)	5.16(0.73)	8.52	0.004
Member Attachment	4.22(0.88)	4.59(0.81)	5.24	0.024

Note. Bonferroni correction of $p < .025$ applied.

Full Study – In Progress

PART 1 (Spring 2019)

- **Inputs:** Secondary club data
- **Activities/Outputs:**
 - Sport
 - Social
 - Fundraising
 - Administrative
- **Outcomes:**
 - Sport club capacity
 - 9 dimensions of wellness
 - Secondary academic data

PART 2 (Fall 2019)

- **Inputs:** Secondary club data
- **Activities/Outputs:**
 - Sport
 - Social
 - Fundraising
 - Administrative
- **Outcomes:**
 - Work life balance
 - Mental health
 - Athlete burnout
 - Retention
 - Secondary academic data



Community Impact



➤ **Technical Reports**

- OSU Recreational Sports Department
- Clubs investigated

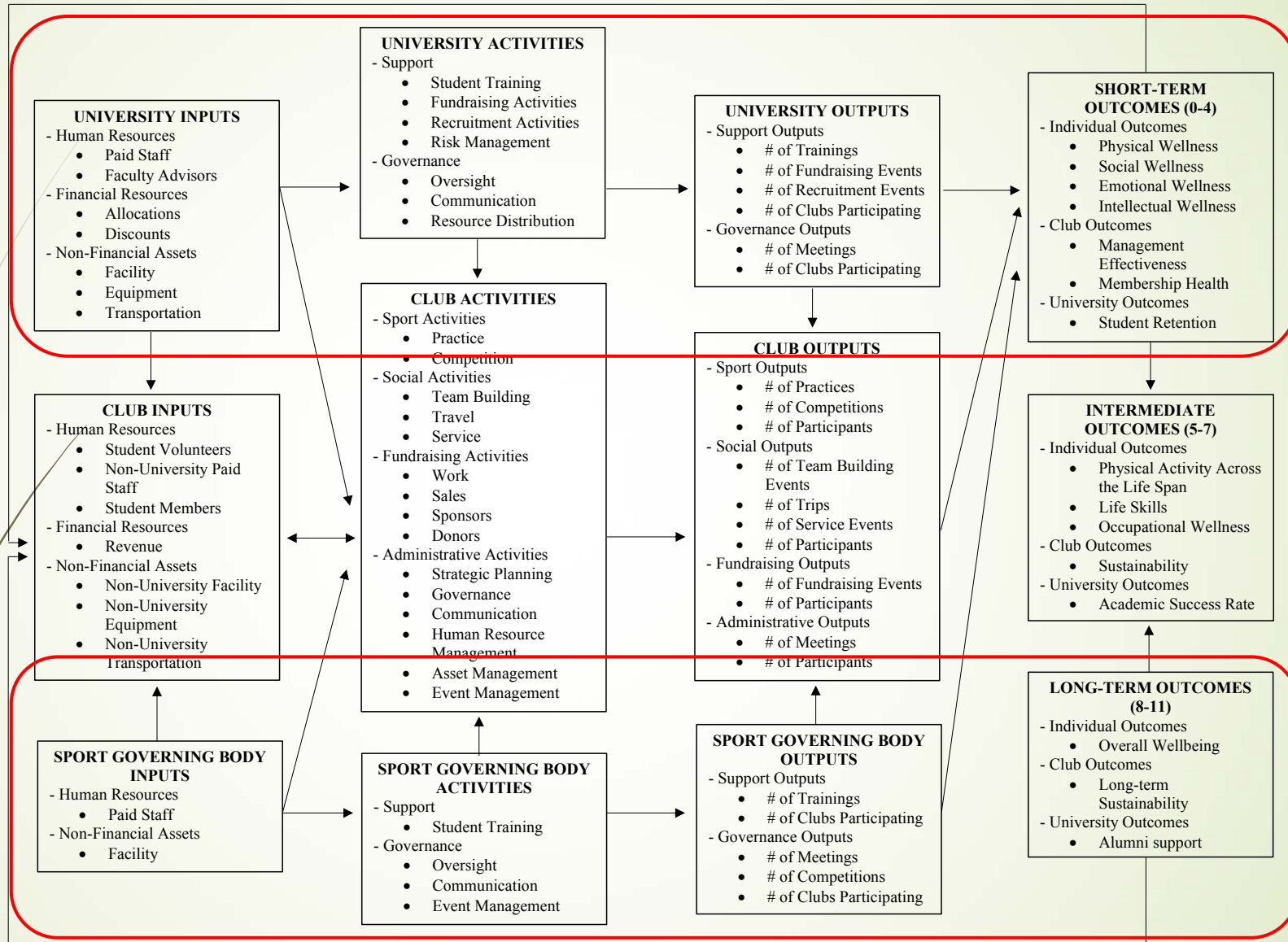
➤ **Conference Presentations**

- Applied Sport Management
- NIRSA Sport Club Institute
- Big Ten Recreational Sports

➤ **Future Publications**

- Recreational Sport Journal
- Applied Sport Management Journal
- Journal of Student Affairs Research & Practice

CLUB PURPOSE & ASSUMPTIONS



EXTERNAL FACTORS (University, Sport Governing Body, & Environmental Constraints)



THANK YOU

SPORTS AND SOCIETY